

91°53'W

91°52'W

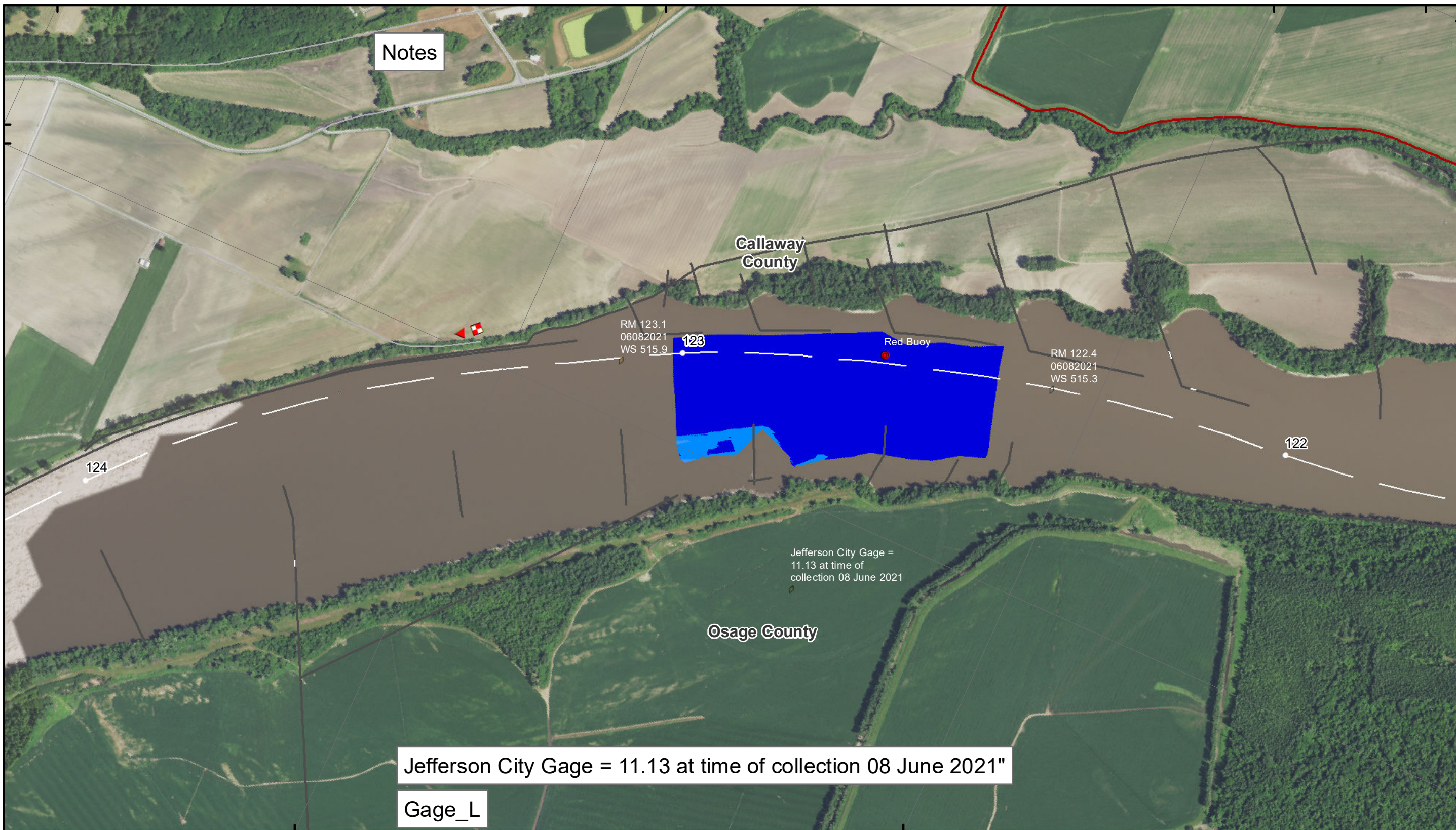
91°51'W

38°41'N

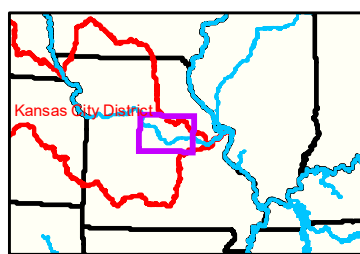
38°40'N

38°41'N

38°40'N



Notes



**LEGEND**

	< 8		< 8 ft		Green Passing		Green
	8 - 9		8 - 9 ft		Red Passing		AIS Green CAN
	9 - 9.5		9 - 10 ft		Green Crossing		AIS Red NUN
	9.5 - 10		10 - 12 ft		Red Crossing		Green CAN
	10 - 12		River Mile				Red NUN
	12 - 14		Sailing Line				
	14 - 16		BSNP Structure				
	> 16		Levee				

**Buoy**

- Green
- Red
- Junction

**Scale:** 0 312.5 625 937.5 1,250 2,500 Feet

**Compass Rose:** N, S, E, W

**NOTES:**  
 Horizontal Coordinate System:  
 World Geodetic System of 1984 (WGS84), projected to the Universal Transverse Mercator (UTM) Zone 15 North. Distance units in U.S. Survey Feet

Vertical Datum:  
 Soundings are shown in feet and indicated depths are referenced to water surface at time of collection.

The information depicted on this map represents the results of a survey conducted on the date indicated and can only be considered to represent the general condition existing at that time.

The location of navigation aids are based on and provided by the U.S. Coast Guard.



**DISCLAIMER:** The U.S. Army Corps of Engineers provides this information for informational purposes only. It is not intended for use in any legal proceeding or as a basis for any claim. The Corps of Engineers makes no warranty, express or implied, regarding the accuracy, completeness, or timeliness of the information provided. The user assumes all responsibility for the use of the information provided. The U.S. Army Corps of Engineers is not liable for any damages, including consequential damages, arising from the use of the information provided.

KANSAS CITY DISTRICT MISSOURI RIVER AREA OFFICE	
Submitted By:	MRAO
Reviewed By:	MRAO
Checked By:	MRAO

**Survey Information**

MO\_02\_LMR  
 MO\_02\_LMR\_20210608\_CS\_122\_5\_123\_0\_SORT  
 08 June 2021

**Sheet Number**  
 11 of 46